

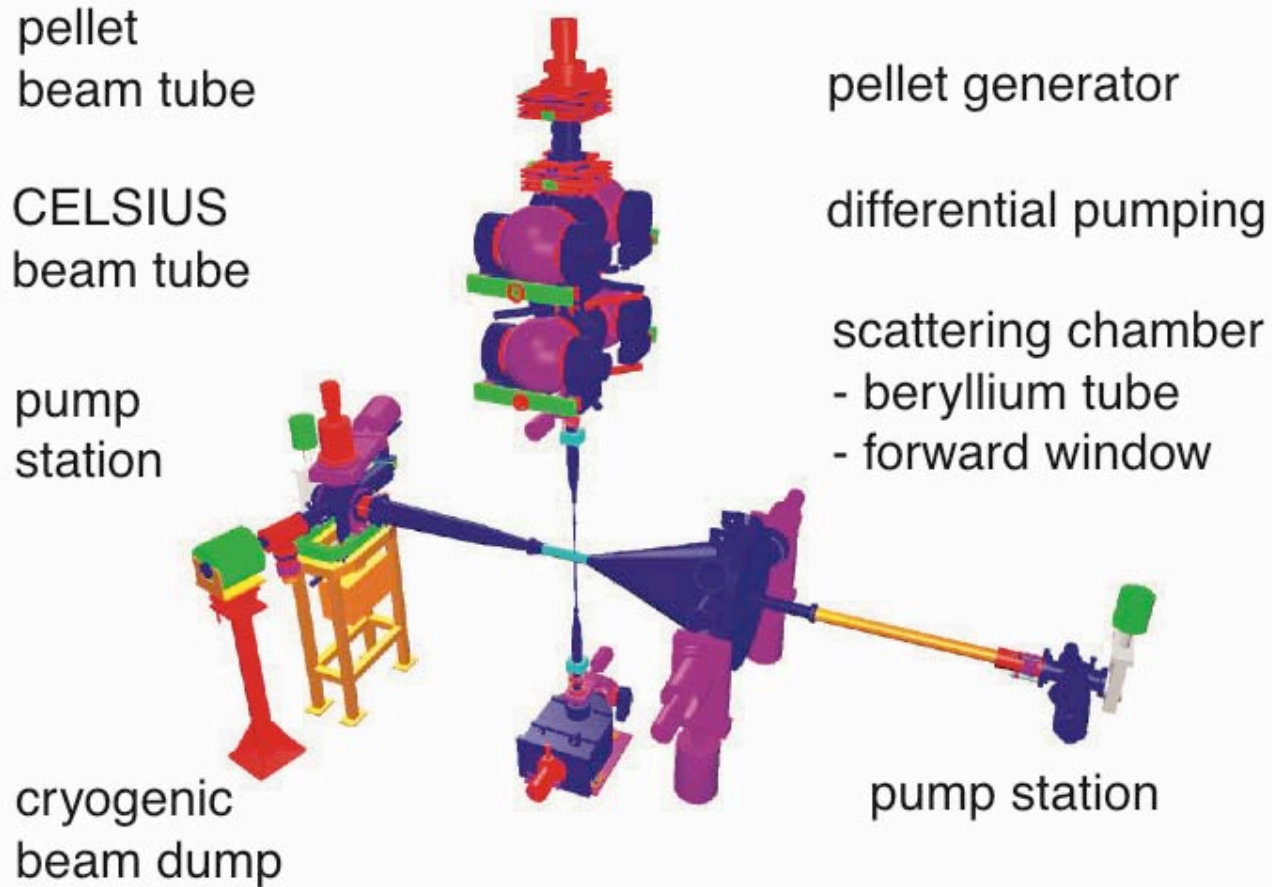
# Pellet Test Station (PTS)

**Inti Lehmann**

**ISV, Uppsala**

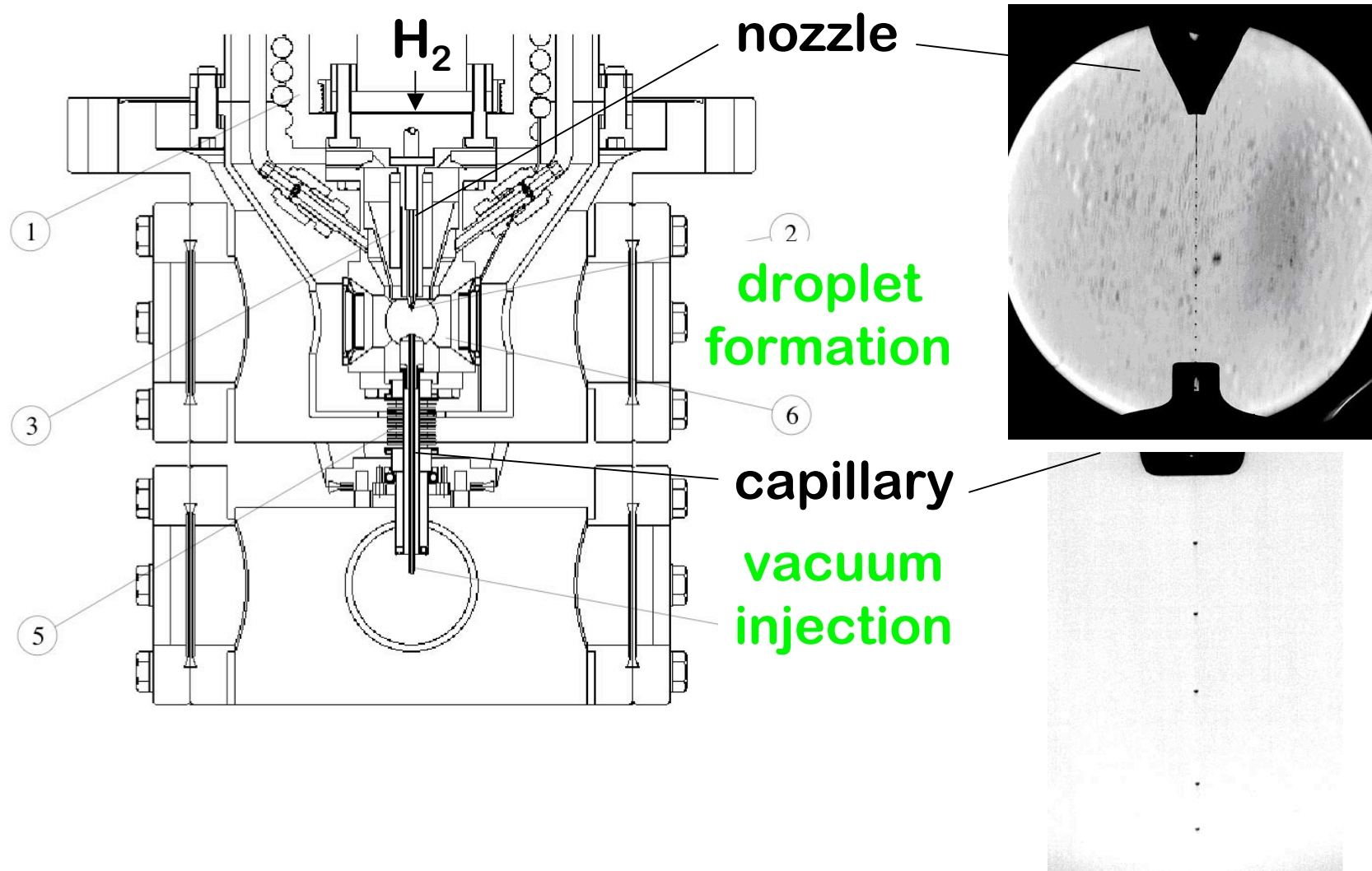
**[www5.tsl.uu.se/panda](http://www5.tsl.uu.se/panda)**

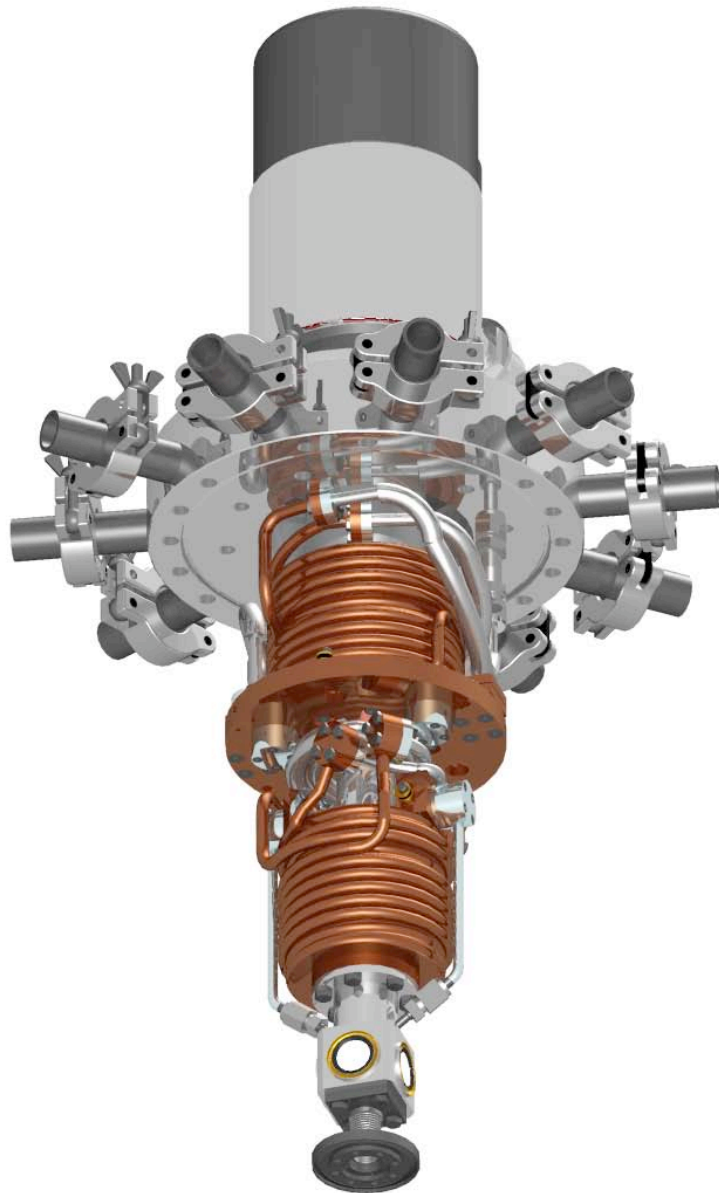
# WASA Pellet Target



- **access and availability restricted**
- **development of the PTS !**

# Pellet Generation Principle



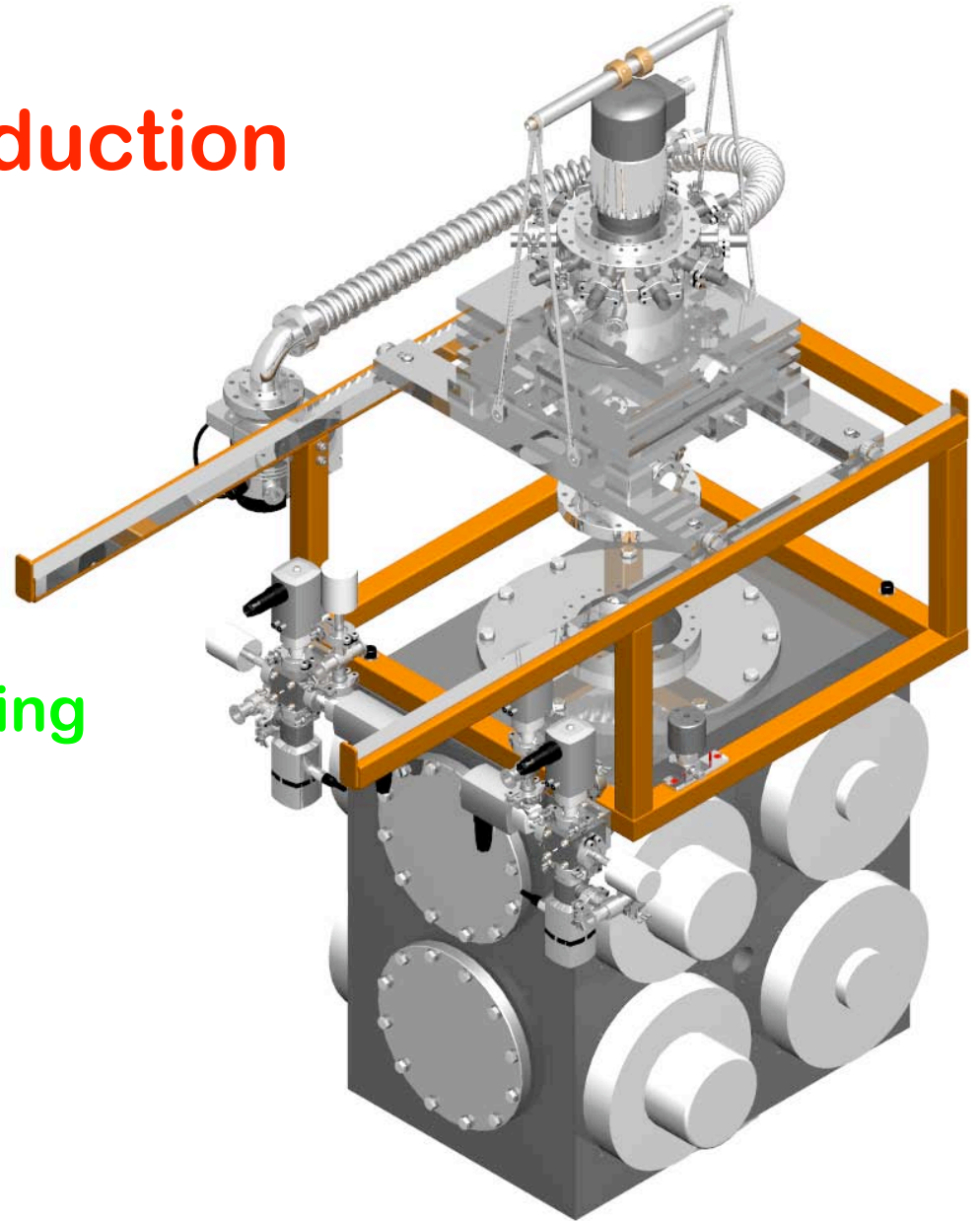


## Improved Cold-Head

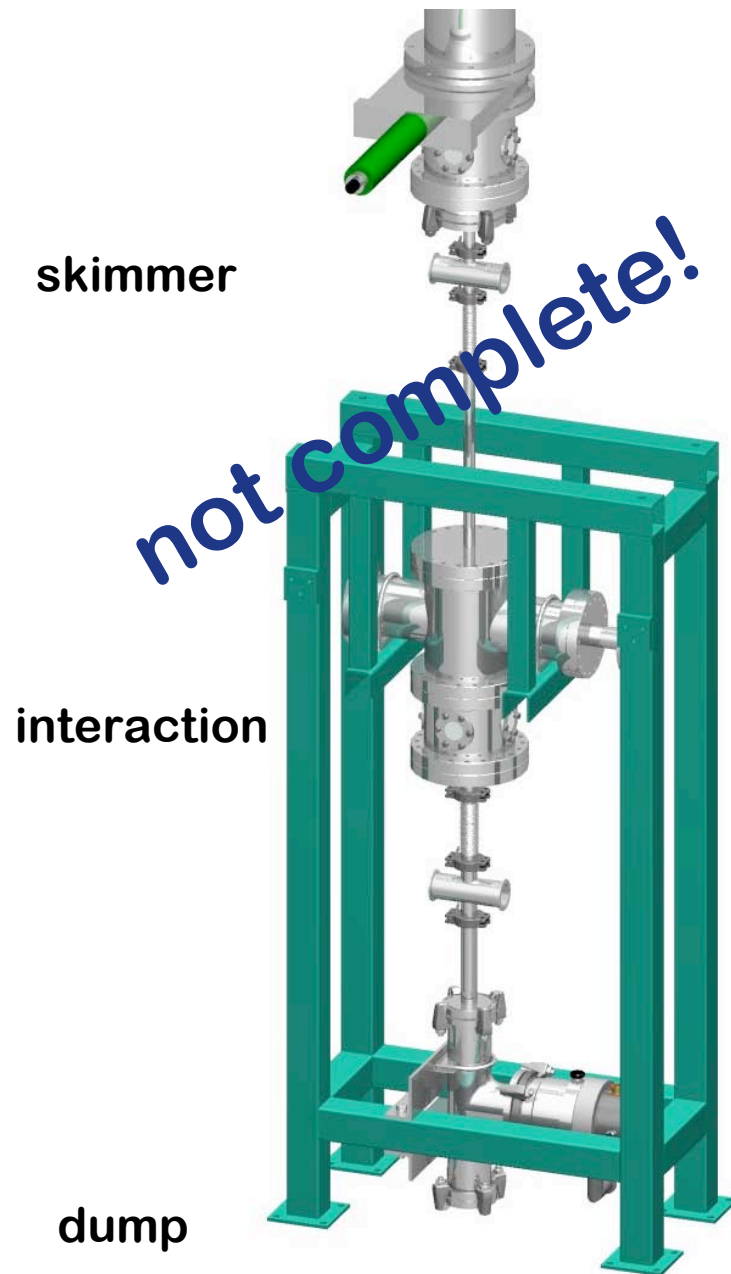
- lower vibrations
- faster pumping
- vacuum monitoring in all stages
- individual heating
- temperature measurements

# Pellet Production

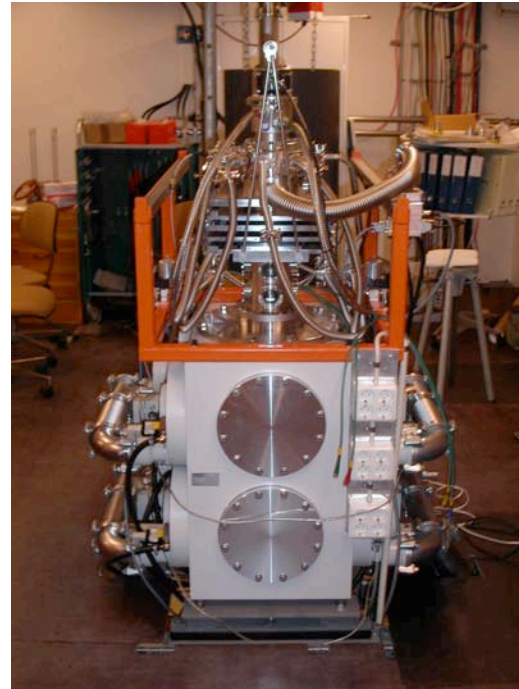
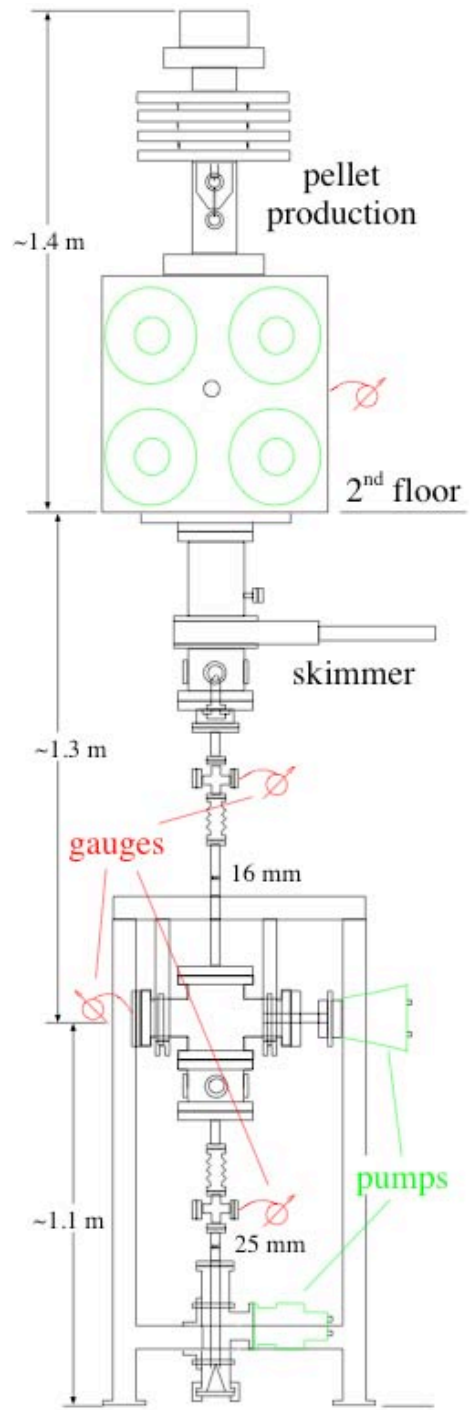
- nozzle + capillary interchangeable with WASA
- good access for mounting
- fast exchange of parts

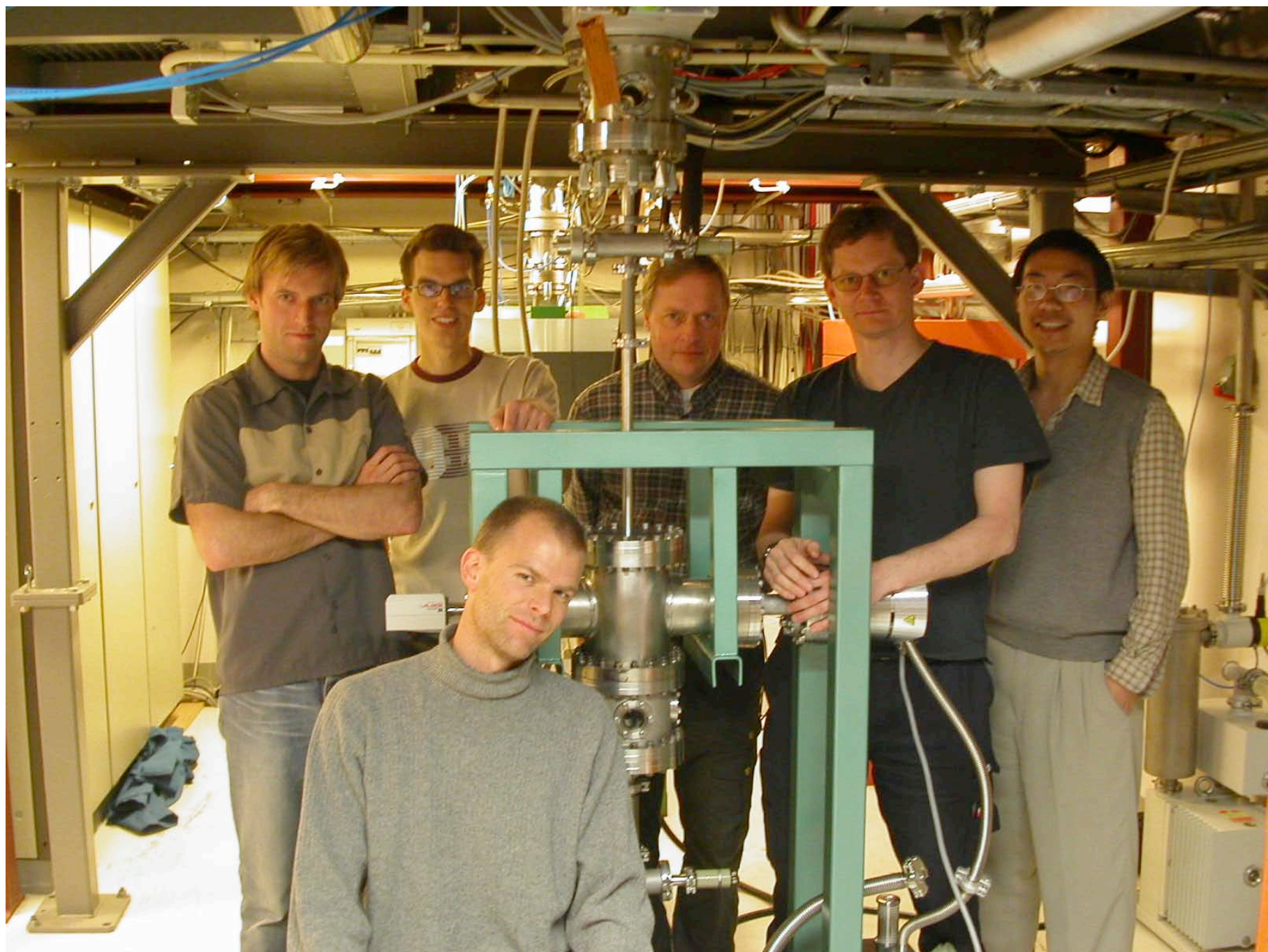


# Lower Vacuum System



- simulating PANDA vacuum-wise
- vacuum monitoring at six points
- optical observation of the pellets
- flexible design
- ongoing development







# Pellet Target Development

- in-kind contribution of Sweden to PANDA at the new FAIR facility
- TSL contribution is strong and has been recognised
- further TSL engagement is required and may attract funds from outside
- COSY/Lanzhou development

